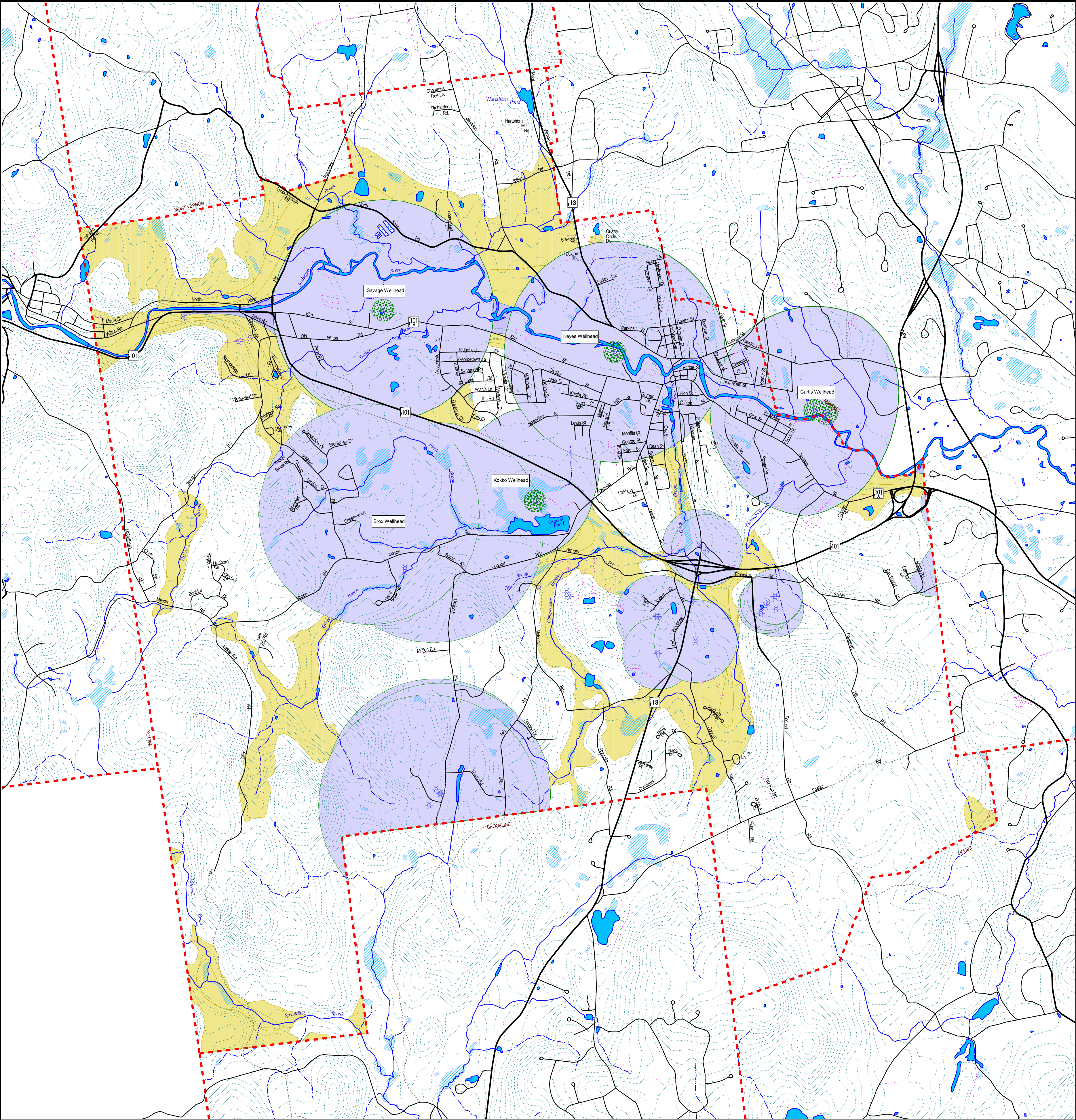


Groundwater Protection Area: Milford, NH



★ Registered Water Users
(Greater than 20,000 gallons per day)

Level I Protection Area

Level II Protection Area

Wellhead Sanitary
Radius (400')

Local or State Roads

- State Roads
- Local Roads
- Class VI
- Private

Water Features

- Rivers or Streams
- Intermittent Streams
- Lakes or Ponds
- Wetlands

Land Features

- 20' Elevation Contours

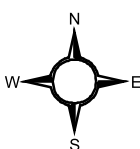
Level I is defined by the USGS Stratified Drift Aquifer map and is the area identified as transmissivity greater than 8,000 square feet per day.

Level II is defined by the USGS Stratified Drift Aquifer map and is the area identified as transmissivity less than 8,000 square feet per day. This map represents the best available digital data from local or state sources as of 2002.

Wellhead Protection Areas were defined by NH DES Water Resources Bureau, and digitized in the Drinking Water Source Water Protection Areas database, current October, 2002. Protection area for the Brox Wellhead was defined by NRPC as a 4,000' buffer around the wellhead. Municipal Water Users and Registered Water Users data is managed by NH DES in the Public Water Supply Sources and Registered Water Users GIS databases, both current October, 2002.

Base roadway inventory data was digitized by the NH DOT, updated by NRPC 2002. Hydrologic data was assembled by the UNH Complex Systems Research Center. Digital location of water supply sources and protection areas was developed and is maintained by the NH DES, Water Division, with monthly updates. Stratified drift aquifer data was developed by the USGS in association with the NHDES Water Division. Municipal Water Users and Registered Water Users data is managed by NH DES in the Registered Water Users GIS database, current October, 2002.

project: j:\gis\lavprojects\milfordgroundwater.apr



Map prepared by Nashua Regional Planning Commission,
Printed 10/24/02

0.5 0 0.5 1 Miles

2000 0 2000 4000 Feet