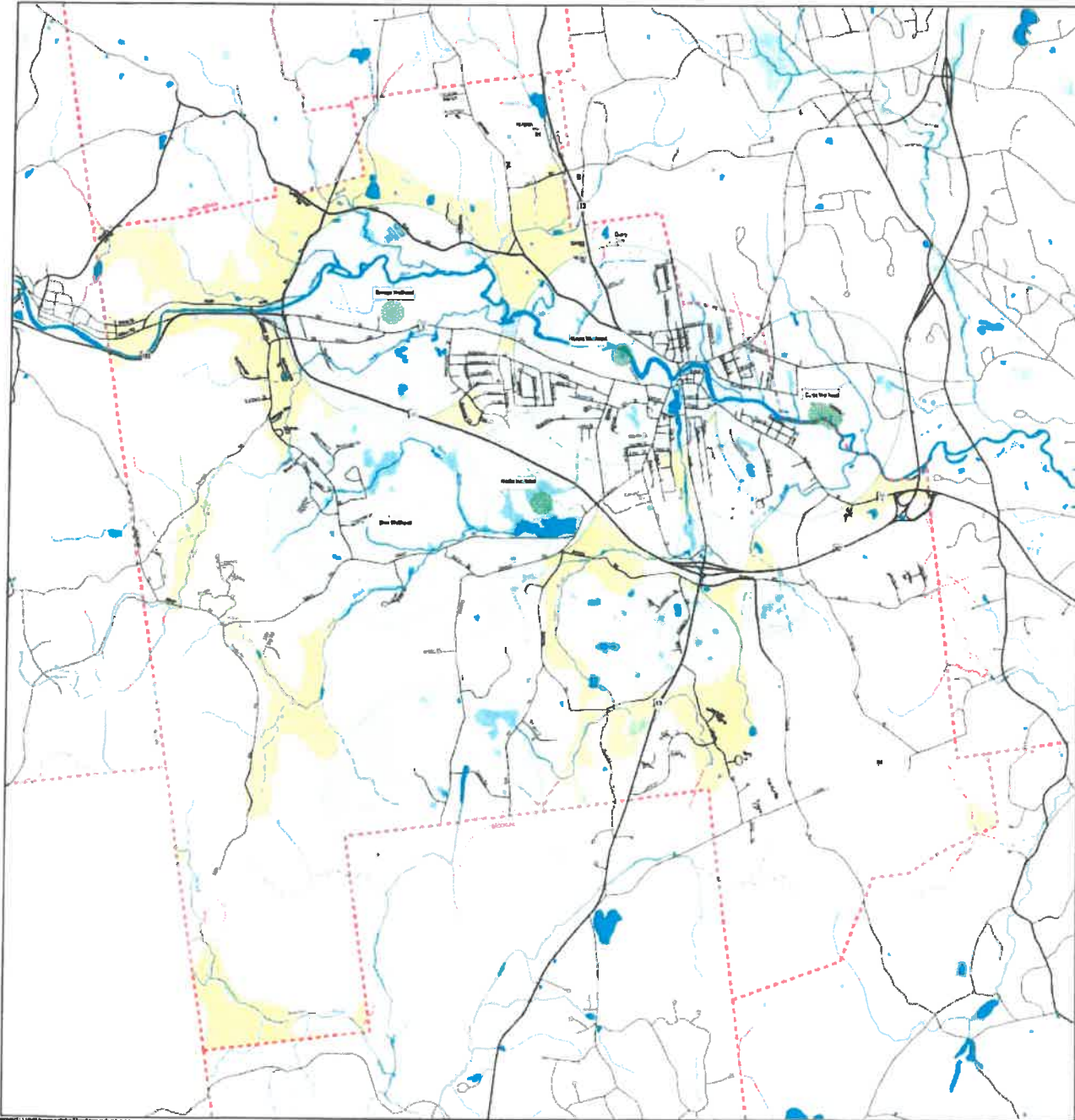


# Exhibit 17

## Groundwater Protection Area: Milford, NH



Registered Water Users  
(Greater than 20,000 gallons per day)

Level I Protection Area

Level II Protection Area

Wellhead Sanitary  
Radius (400')

Local or State Roads

State Roads  
Local Roads  
Class VI  
Private

Water Features

Rivers or Streams  
Intermittent Streams  
Lakes or Ponds  
Wetlands

Land Features

20' Elevation Contours

Level I is defined by the USGS Stratified Drift Aquifer map and is the area identified as permeability greater than 6,000 square feet per day.

Level II is defined by the USGS Stratified Drift Aquifer map and is the area identified as permeability less than 6,000 square feet per day. This map represents the best available digital data from local or state sources as of 2002.

Wellhead Protection Areas were defined by NH DES Water Resources Bureau, and digitized on the Drinking Water Source Water Protection Areas database, current October, 2002. Protection area for the Brim Wellhead was defined by NHDES as a 400' buffer around the wellhead. Municipal Water Users and Registered Water Users data is managed by NH DES in the Public Water Supply Sources and Registered Water Users GIS database, last current October, 2002.

Interpolated Topographic data was digitized by the NH DOT, revised by NHDES, 2002. Hydrologic data was assembled by the U.S. Geological Survey, Research Center. Digital location of water supply sources and wetlands were developed and maintained by the NHDES, Water Division, with monthly updates. Stratified drift aquifer data was developed by the USGS in cooperation with the NHDES Water Division. Municipal Water Users and Registered Water Users data is managed by NH DES in the Regional Water Users GIS database, current October, 2002.



Map prepared by Nashua Regional Planning Commission.  
Printed 10/24/02

