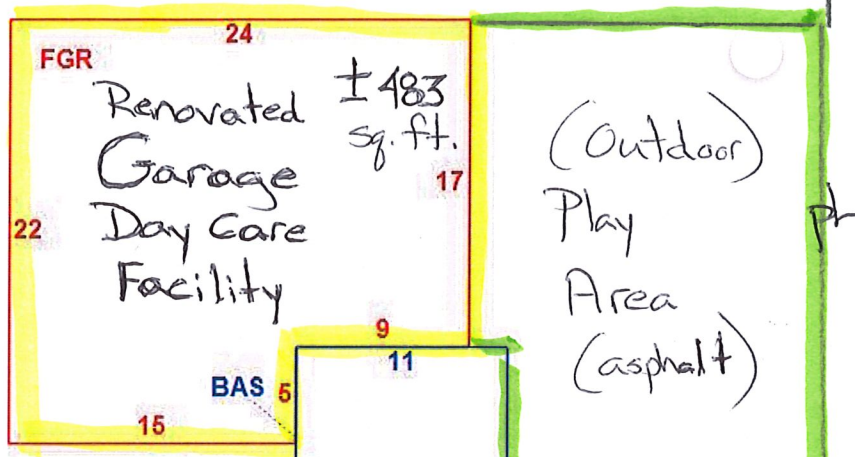


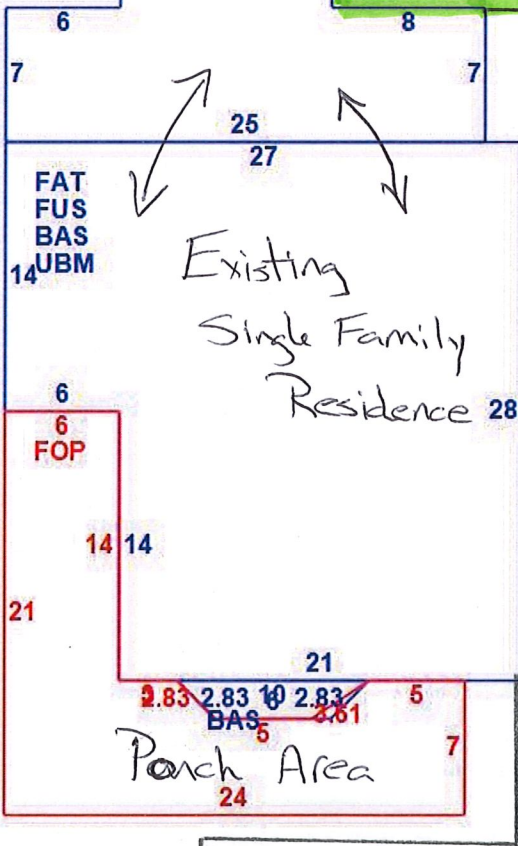
Back Yard



Not To Scale

Limit of Vehicular Temp Parking

403
Nashua St.
Applicant:
Emily Russo



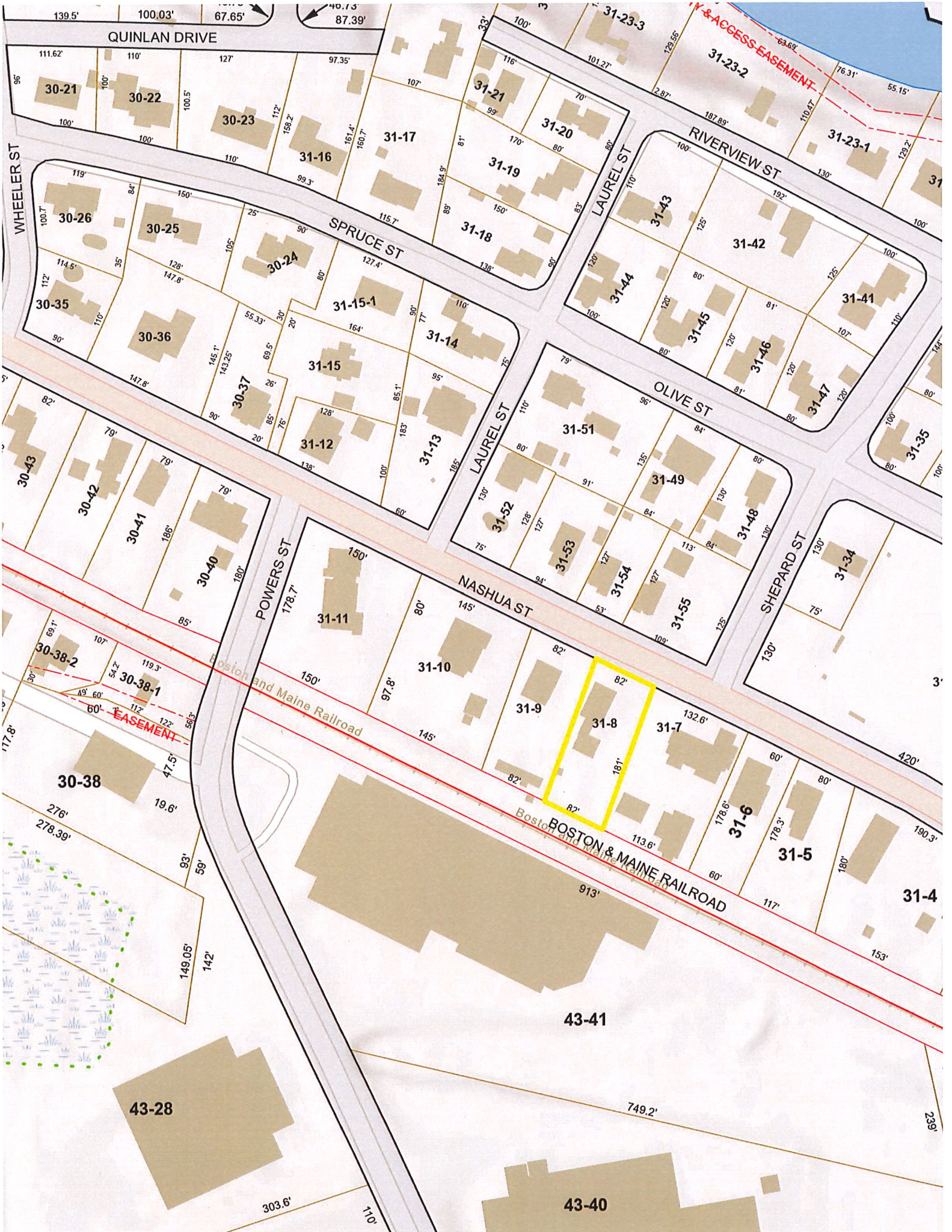
New asphalt
Parking Pull-out

Dog
Grooming
Business
399
Nashua
St.

* Home built
in 1920,
per Town Records

Nashua St.

407 + 409
Nashua St. Lot A



QUINLAN DRIVE

WHEELER ST

SPRUCE ST

LAUREL ST

OLIVE ST

NASHUA ST

POWERS ST

RIVERVIEW ST

SHEPARD ST

BOSTON & MAINE RAILROAD

30-21

30-22

30-23

31-16

31-17

31-21

31-20

31-19

31-18

30-24

31-15-1

31-14

31-15

31-12

31-13

30-43

30-42

30-41

30-40

30-38-2

30-38-1

30-38

31-11

31-10

31-9

31-8

31-7

31-6

31-5

31-4

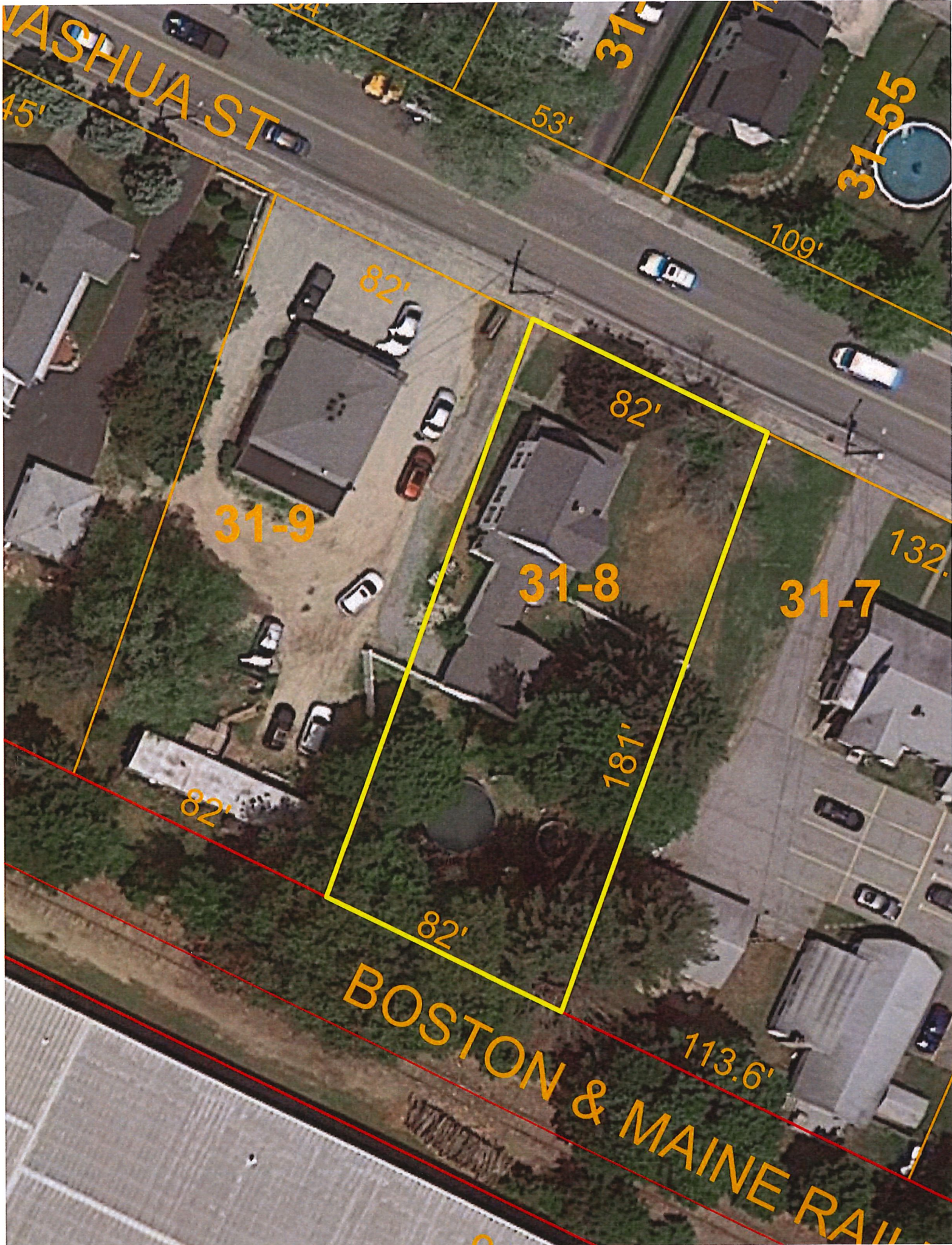
43-41

43-28

43-40

ACCESS-EASEMENT

EASEMENT



WASHUA ST

31-5

31-55

31-9

31-8

31-7

BOSTON & MAINE RAILROAD

45'

53'

109'

82'

82'

132'

82'

181'

82'

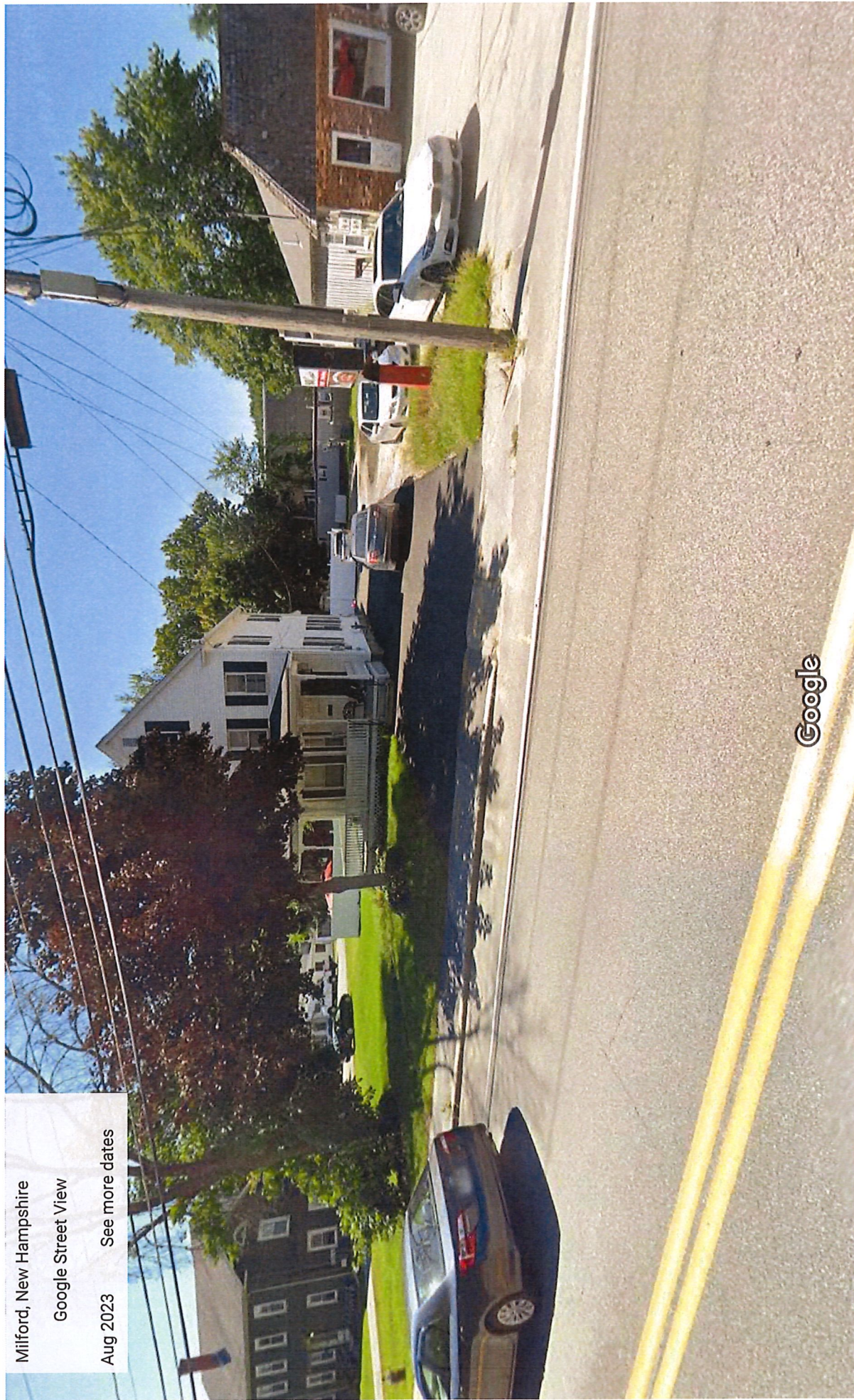
113.6'

Milford, New Hampshire

Google Street View

Aug 2023

[See more dates](#)



Milford, New Hampshire

Google Street View

Aug 2023

See more dates











