



**Milford Heritage Commission**  
**Town Hall**  
**1 Union Square**  
**Milford NH 03055**

Board of Selectmen  
Town of Milford  
1 Union Square  
Milford NH 03055

19 January 2023

The Heritage Commission is submitting this tower observation report to assist with the plans to construct a 120 ft monopole cell phone tower on the peak of Federal Hill at the site of the historic Fire Watch Tower.

**Background**

On or about August 11<sup>th</sup>, 2022 the Heritage Commission received a request for information by means of a NH State Form 106, Request for Project Review. Project number 694398 tax map 53, lot #22. The owner of the project is US Cellular Corporation c/o KJK Wireless of Nashua, NH. The state requested that responses go to Audra Klumb of A&D Klumb Environmental LLC of Webster, NH. The Heritage Commission met on September 14<sup>th</sup>, 2022 and discussed the plans as presented and found that there were several likely heritage issues with the plans as presented. An earlier request went had gone to the Town and was commented on by the Milford Historical Society in a memo to the Planning Board on December 13<sup>th</sup> 2014, documenting very similar concerns. These concerns are quoted here:

“The tower has particular interest to the area Heritage as it has the potential of affecting the view from a scenic roadway and multiple historical properties. The tower is also likely to affect the view of the hiking trails at the protected Monson Area. We would like to see that a test be done with a trial balloon at the tower height to investigate the view to important Heritage sites around town. What will happen to the historical and popular Federal Hill Tower that is there now?”

The Heritage commission is still seeking specific plans of what is to be done with the Fire Tower on the site. As requested, the project manager floated a 4½ ft helium balloon at the proposed new tower height, 120 feet vs the existing tower of 69 feet. The commission enlisted the help of nine volunteers as observers to view the trial balloon launch of January 11th, 2023. The result of this investigation is included here.

## **Method**

Observers were selected and areas of view were assigned. These areas were selected for their heritage value, elevation and on scenic roadways both in town and neighboring towns of Hollis and Brookline. Observers were both viewing from their cars on roadways and hiking on foot on designated trails. Individual observations were compiled including location and photos of what was seen. The data was collected and compiled using both qualitative and quantitative measures. A total score was found by multiplying the individual scores without weighting in three categories: elevation, size and heritage sensitivity.

Measures of elevation were determined by a score of 1 for invisible, up to 5 for 75% or more of the tower could be seen, (scores with a five could see the existing tower). Size measures were determined by a similar 1 to 5 range, 1 being invisible and to the degree of visibility up to 5 being obstructive. The heritage impact was scored from 1 to 5 with 1 being minimal (house built after 1940) up to unique with a 5 as a feature unique to the State of NH such as a registered property or the original settlement of Monson. 40 sites were cataloged in three towns to provide any insight to regional impact.

## **Summary**

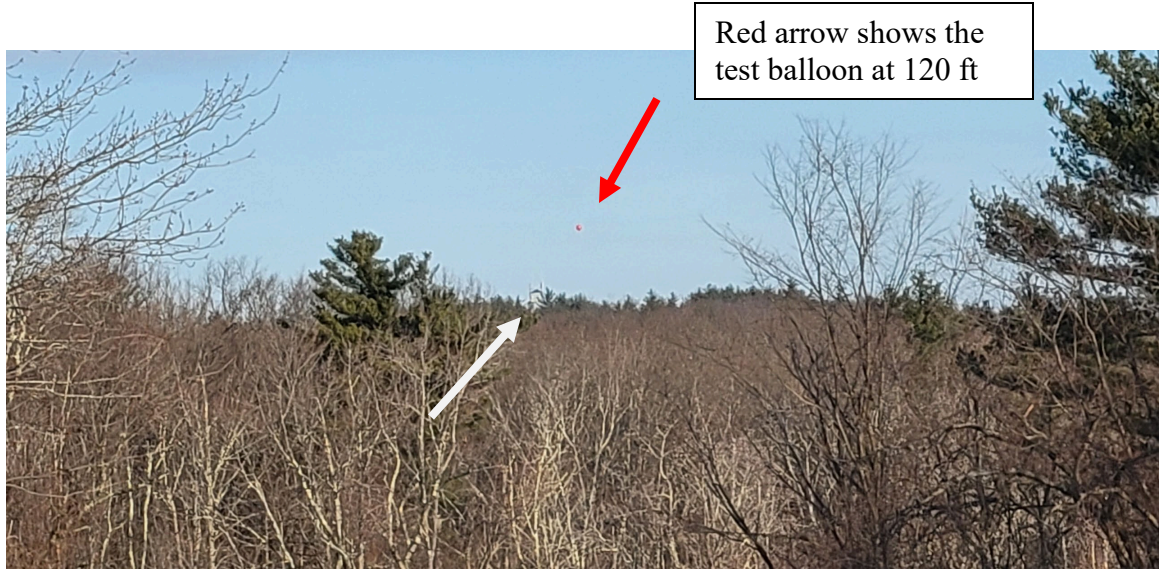
This study and observation exercise show three areas of concern in scenic areas. The balloon was sighted on two roads deemed to be scenic according to the town master plan: Colburn Rd and Foster Rd (designated 1988) and the historically significant preserved village of Monson. The photos included are from the observation activity and the dimensioned plans of the tower design. The antenna array is proposed to be roughly 3¼ balloons wide and 2 balloons tall. The balloon was also visible in Brookline at the trail head to Palmer-Bartell trails on Rt 13 proving regional impact.

Respectfully

David Palance  
Chairman  
Milford Heritage Commission

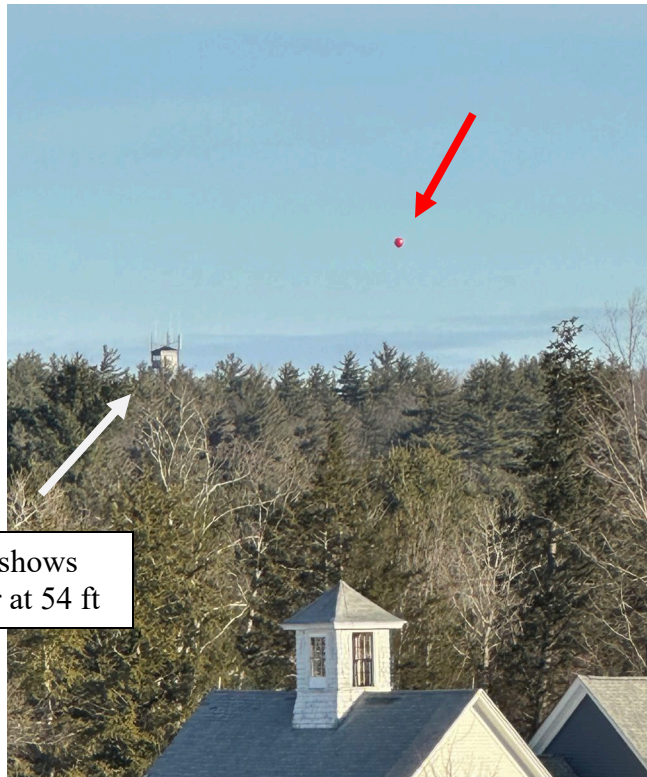


**Milford Heritage Commission**  
**Town Hall**  
**1 Union Square**  
**Milford NH 03055**



Red arrow shows the test balloon at 120 ft

**34 Colburn Rd**



White arrow shows the fire tower at 54 ft

**114 Foster Rd**





**Milford Heritage Commission**  
**Town Hall**  
**1 Union Square**  
**Milford NH 03055**

**Monson Village**



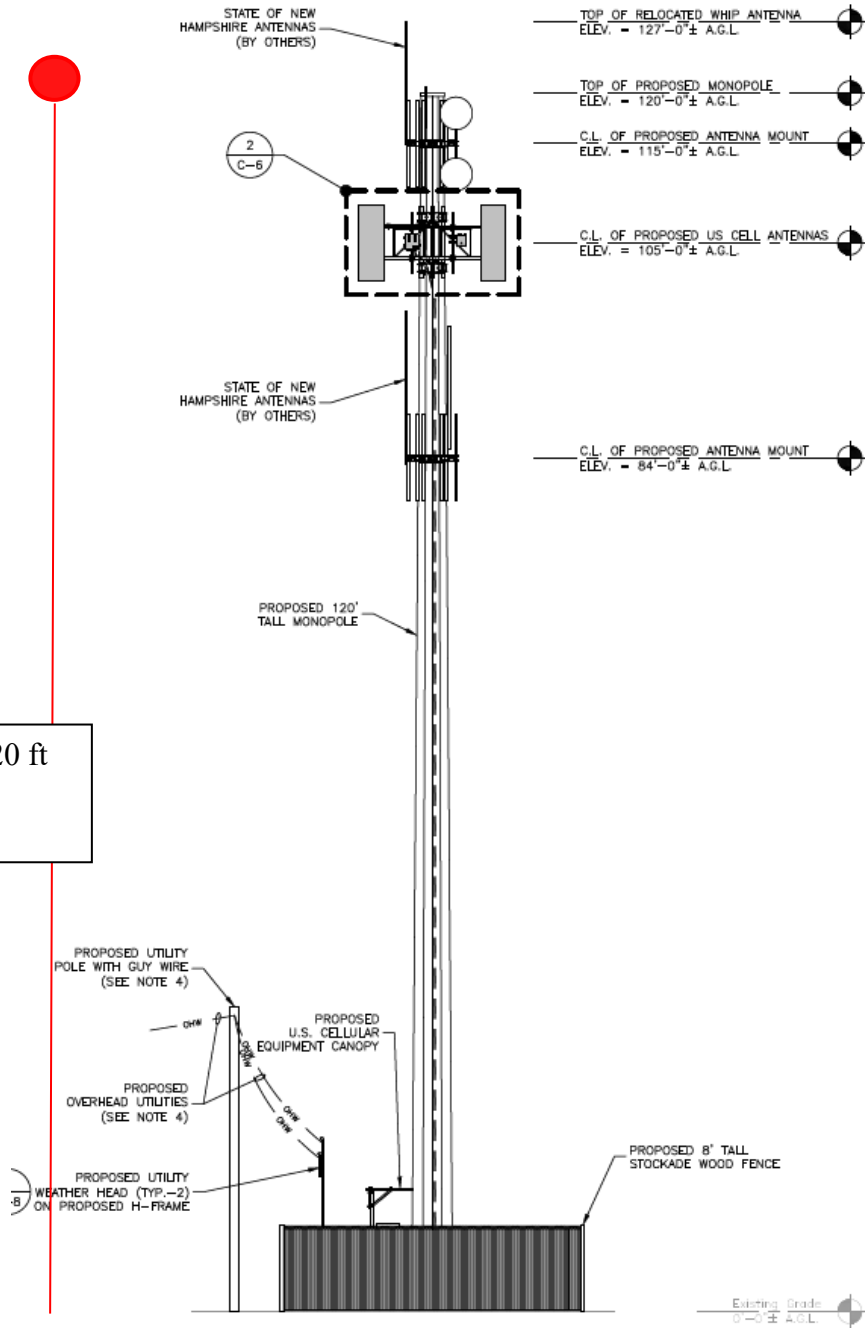


# Milford Heritage Commission

## Town Hall

### 1 Union Square

### Milford NH 03055



Test balloon at 120 ft in scale with the proposed tower



# Milford Heritage Commission

## Town Hall

### 1 Union Square

### Milford NH 03055

#### Tower observations

January 11, 2023 between the hours of 9:00 and 11:00am

Elevation 1- invisible, 2- tree line, 3- 15%, 4- 50% ,5- 75%

Size 1- invisible, 2- tiny, 3- noticeable, 4- moderate, 5- obstructive

Heritage 1- minimal, 2- scenic, 3- important, 4- historic, 5- unique

Key	Location	Elevation	Size	Heritage	Score
24	Monson 42.7920, -71.6216	3	4	5	60.00
25	Monson near pond	3	4	5	60.00
15	114 Foster Rd	5	5	2	50.00
2	34/36 Colburn Rd	5	5	2	50.00
11	446 Federal Hill Rd	4	3	4	48.00
19	249 Melendy Rd	5	2	4	40.00
26	Federal Hill Rd	4	4	2	32.00
12	108 Foster Rd	5	3	2	30.00
37	461 Federal Hill Rd	5	3	2	30.00
14	160 Foster Rd	2	3	4	24.00
1	204 Federal Hill Rd	2	3	4	24.00
13	204 Federal Hill Rd	2	3	4	24.00
23	42 Hood Rd, Brookline	4	2	3	24.00
31	Rt 13 Bartell Trail head, Brookline	4	2	3	24.00
28	Federal Hill Rd	4	3	2	24.00
5	235 Federal Hill Rd	5	1	4	20.00
9	205 Union St	5	2	2	20.00
8	196 Federal Hill Rd	3	3	2	18.00
7	224 Federal Hill Rd	3	3	2	18.00
40	326 Ponemah Rd	3	3	2	18.00
27	Federal Hill Rd	3	3	2	18.00
16	16 Hammon Rd	4	2	2	16.00
17	16 Hammon Rd	4	2	2	16.00
4	101 Amherst/Milford line	5	2	1	10.00
6	472 Federal Hill Rd	5	1	2	10.00
10	35 Emerson Rd	2	2	2	8.00
21	528 Rt 13 south	4	2	1	8.00
22	528 Rt 13 south	4	2	1	8.00
20	249 Melendy Rd	1	1	4	4.00
38	Roof of Town Hall	1	1	4	4.00
30	Rt 101 BP at Osgood bridge	2	2	1	4.00
33	1 Ledgewood Dr	1	1	3	3.00
18	42 Hood Rd, Brookline	1	1	3	3.00
35	Shepard Park - 14 Olive St	1	1	3	3.00
39	451 Ponemah Rd	1	1	2	2.00
3	101 Amherst/Milford line	1	1	1	1.00
32	135 Prospect St	1	1	1	1.00
34	Edgewood Plaza - 309 Nashua St	1	1	1	1.00
36	Lorden Plaza - 614 Nashua St	1	1	1	1.00
29	Rt 101 BP at Osgood bridge	1	1	1	1.00

Meets 2<sup>nd</sup> Wednesday of each month 7:00PM  
 Milford Town Hall  
 Banquet Room