

MELENDY UNDERPASS PROJECT (MUP)

Area of Impact : approx. 1200 sqft

Trees to be removed:

>5" DBH South 11 trees

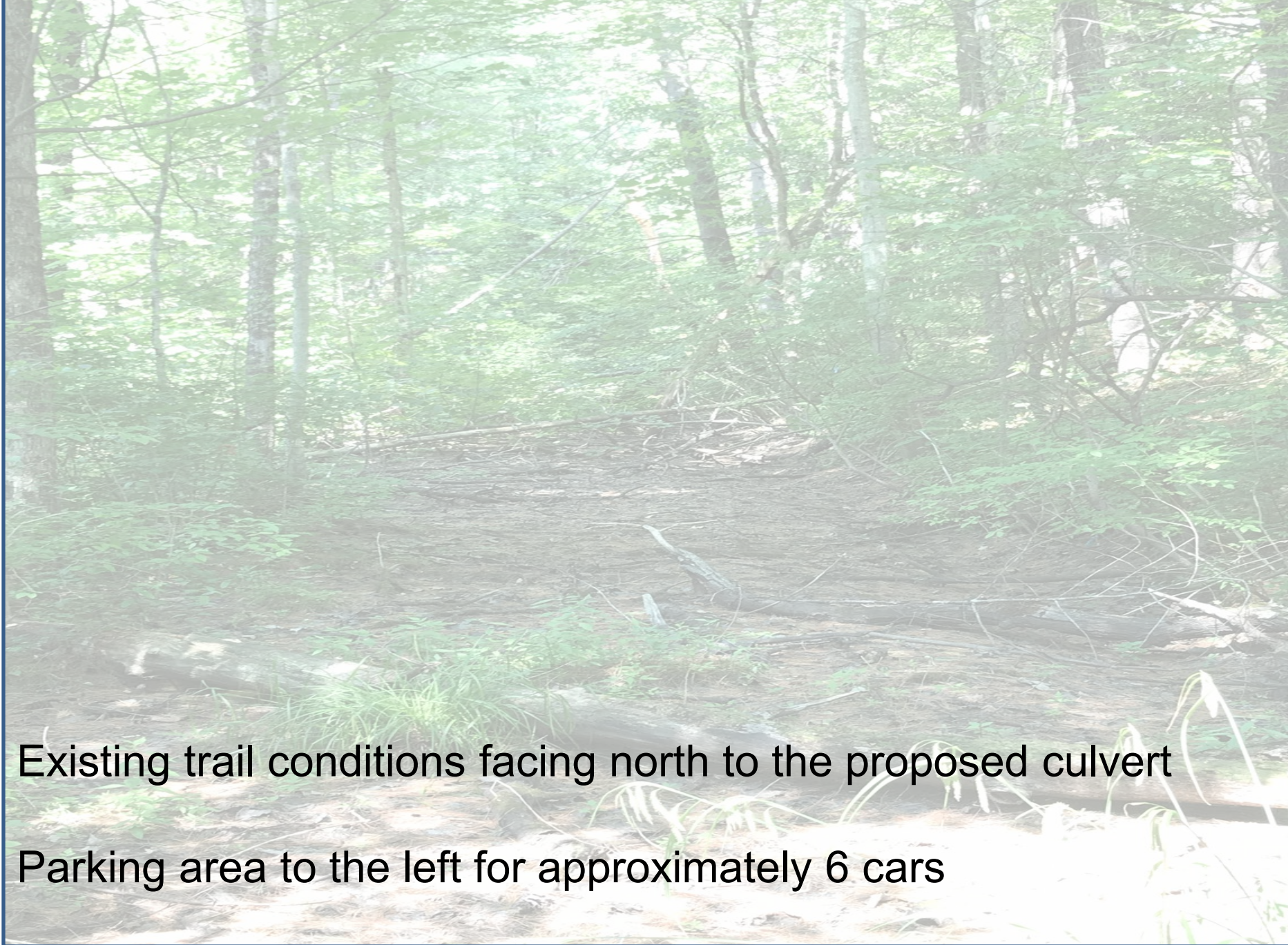
North 1 tree

<5" DBH South 18 trees

North 7 trees

Stairs will remain

The MCC authorized the Tunnel Team and appointed Rodny Richie, Bill Parker and Lori Kingston to assist the Commission



Existing trail conditions facing north to the proposed culvert

Parking area to the left for approximately 6 cars