



# Milford Oval and Nashua Road Pedestrian and Traffic Improvements

## Alternatives Presentation Meeting



February 15, 2023

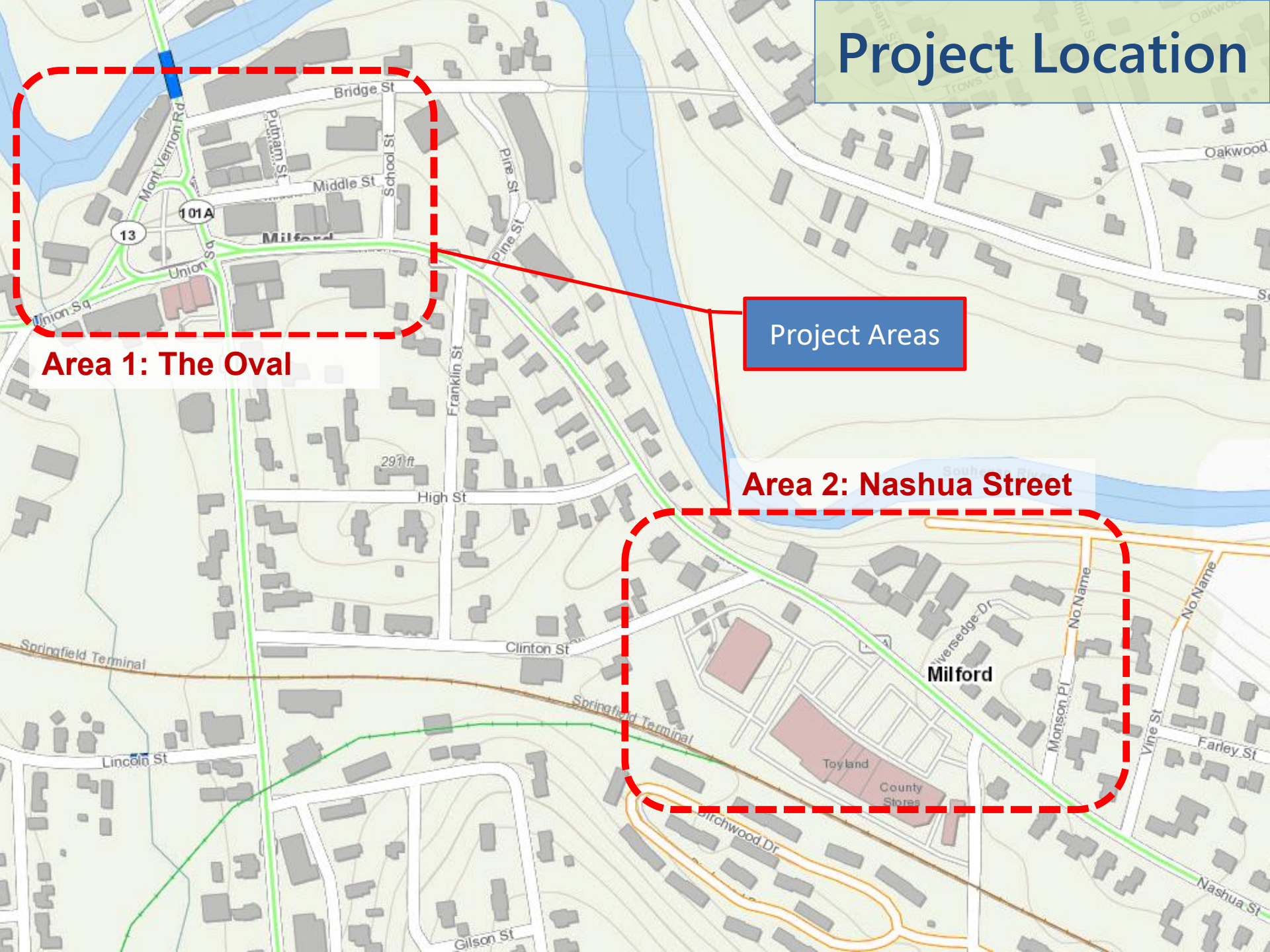


# Meeting Purpose

- Review the project limits and context
- Review program funding requirements
- Review project considerations
- Review Conceptual Designs
- Accept public input on the projects



# Project Location



**Area 1: The Oval**

**Project Areas**

**Area 2: Nashua Street**

# Project Development

---

## Local Public Agency Manual for the Development of Projects



# Program Requirements

- Project must follow the provisions of the ***NHDOT Local Public Agency (LPA) Manual for the Development of Projects***
- **Milford** administers the project with assistance from engineering consultant **VHB**
- **NHDOT** provides oversight and support
- **FHWA** provides funds and requires compliance with all Federal regulations

# Project Funding

Approx. \$2.1 Million including a Federal Earmark and \$430,000 previously raised Local Matching Funds

# Project Development Process:

- ☐ *Engineering Study*  We are here
- ☐ *Preliminary Design*
- ☐ *Environmental Documentation*
- ☐ *Right-of-Way process & Permitting*
- ☐ *Final Design*
- ☐ *Bidding*
- ☐ *Construction (2023/2024)*



# Project Location: Area 1 – Milford Oval



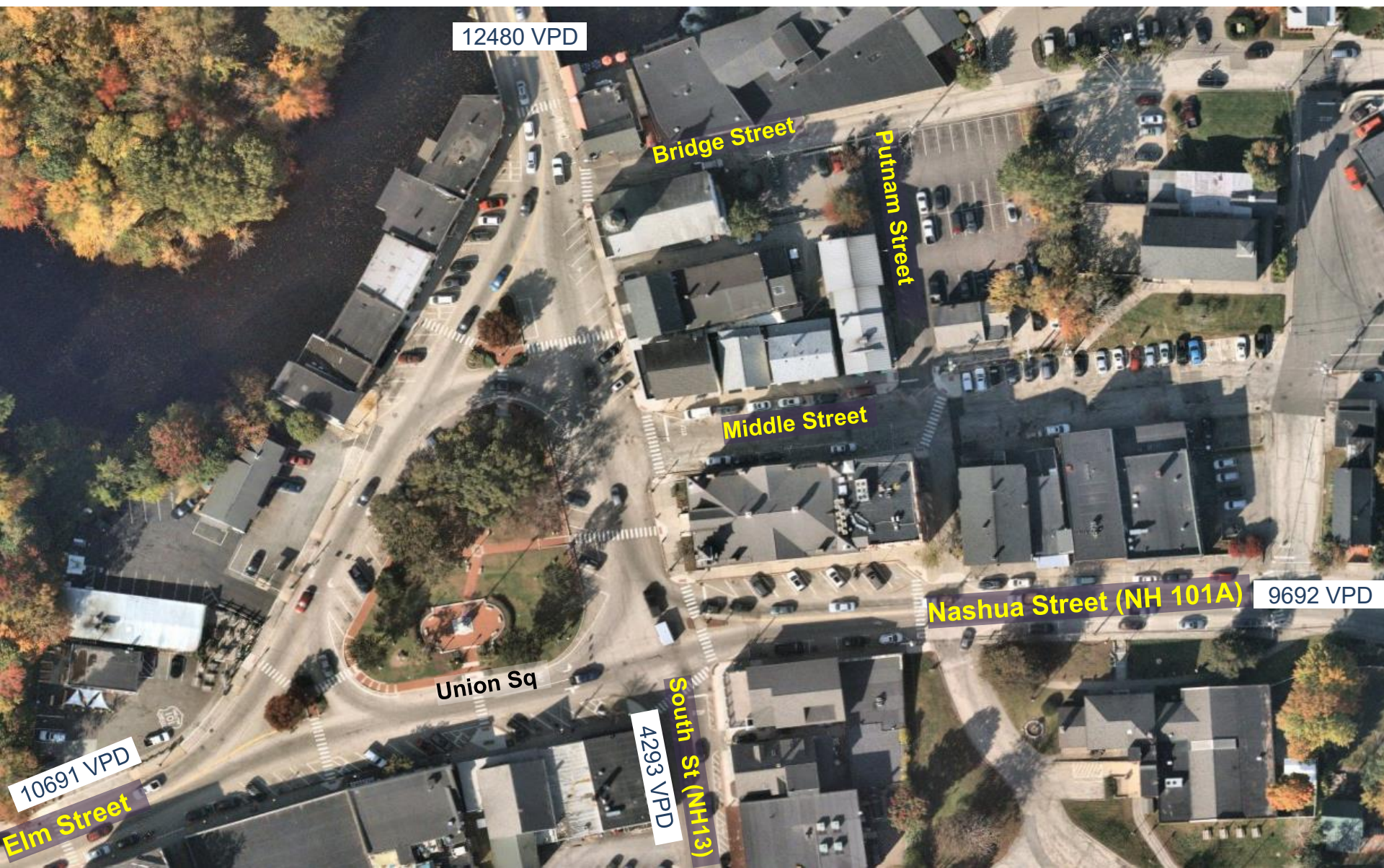


# Milford Oval - Project Considerations

- Traffic Circulation / Truck Maneuverability
- ADA Compliance and Pedestrian Safety
- Parking
- Cultural and Environmental Resources
- Aesthetics
- Lighting

# Milford Oval - Project Considerations

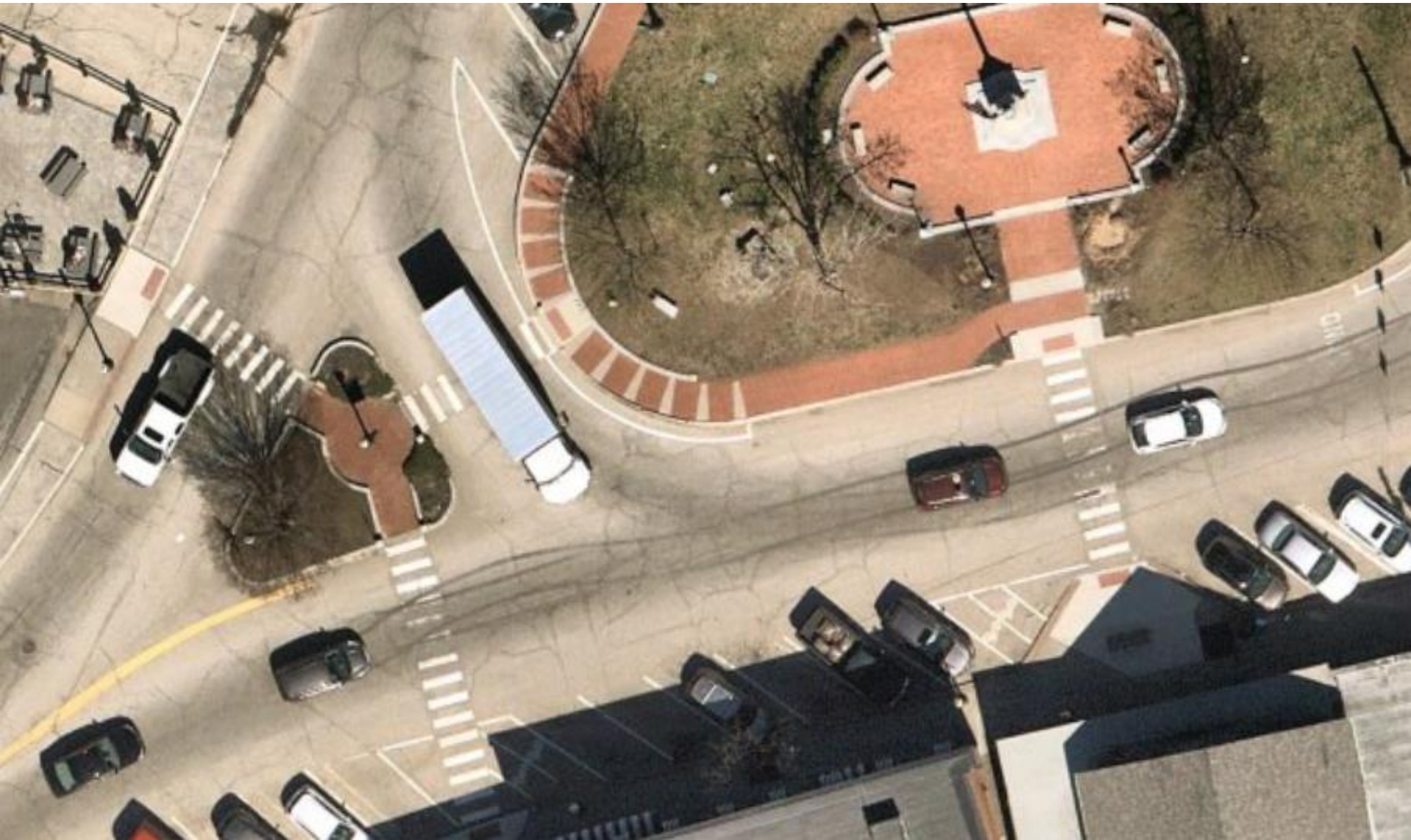
## Traffic Circulation





# Milford Oval - Project Considerations

## Traffic Circulation / Truck Maneuverability





# Milford Oval - Project Considerations

## Traffic Circulation / Truck Maneuverability





# Milford Oval - Project Considerations

## Traffic Circulation / Truck Maneuverability





# Milford Oval - Project Considerations

## Traffic Circulation / Truck Maneuverability





# Milford Oval - Project Considerations

## ADA Compliance and Pedestrian Safety



# Milford Oval - Project Considerations

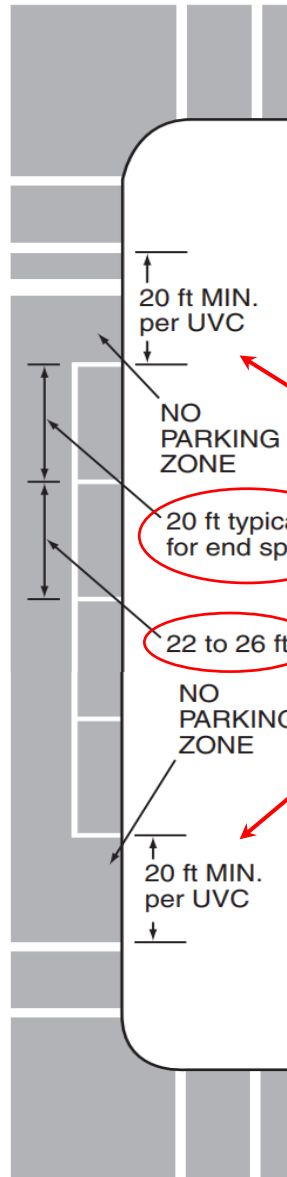
## Parking

83 Spaces  
in this Photo



# Milford Oval - Project Considerations

## Parking



The Manual on Uniform Traffic Control Devices (MUTCD) specifies 20-foot separation from crosswalks



# Milford Oval - Project Considerations

## Parking

Many undersized spaces cut into parking utilization



Standard parking spaces are 22-feet long, and 20-feet long at the ends of parking bays. (The above spaces are approx. 17-feet long)

# Milford Oval - Project Considerations

## Parking

Some spaces are positioned too close to crosswalks.



The Manual on Uniform Traffic Control Devices (MUTCD) specifies 20-foot separation from crosswalks



# Milford Oval - Project Considerations

## Cultural and Environmental Resources

Town Hall  
Construction  
in 1869





# Milford Oval - Project Considerations

## Cultural and Environmental Resources



# Milford Oval - Project Considerations

## Cultural and Environmental Resources

Water Quality /  
MS4  
Considerations





# Milford Oval - Project Considerations

## Aesthetics





# Milford Oval - Project Considerations

## Lighting



# Milford Oval – Purpose and Need Statement

**Purpose:** Improve pedestrian access and safety and large vehicle mobility while preserving aesthetics and parking.

**Need:** There is a need to improve pedestrian safety throughout the Oval area due to the high pedestrian and vehicular activity and the proximity of on-street parking to the numerous marked crosswalks.

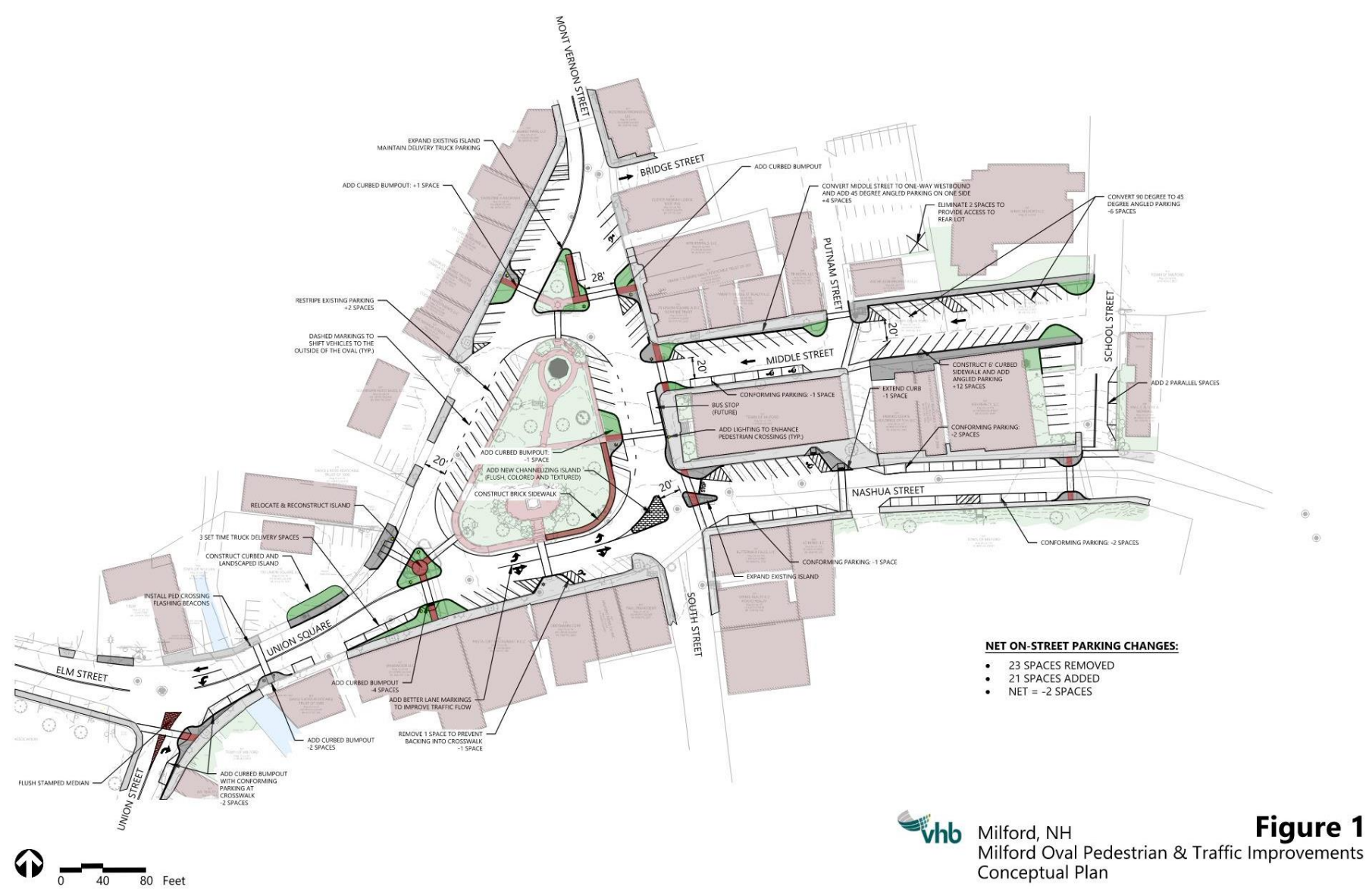
# Milford Oval – Purpose and Need Statement

**Need (continued):** There is a need to adjust the Oval geometry where some large trucks have difficulty negotiating the circulating roadways as evidenced by damage to the granite curbing at the Oval corners.

There is a need to reconfigure non-compliant parking so it meets design guidelines and is not a danger to pedestrians. There is also a need to maintain the downtown parking supply to the extent possible.



# Milford Oval – Proposed Improvements



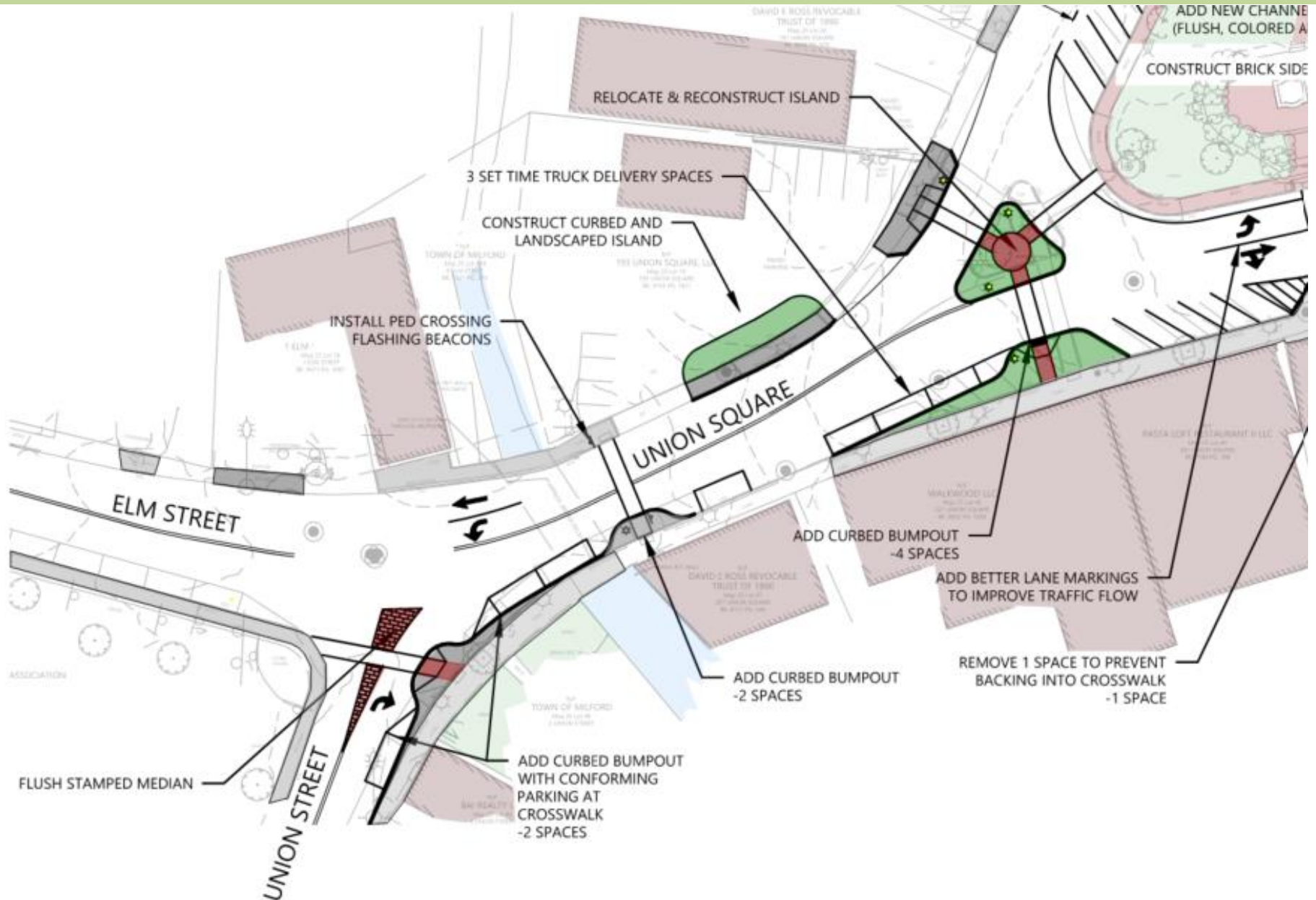
**Figure 1**  
Milford, NH  
Milford Oval Pedestrian & Traffic Improvements  
Conceptual Plan

# Milford Oval – Proposed Improvements





# Milford Oval – Proposed Improvements

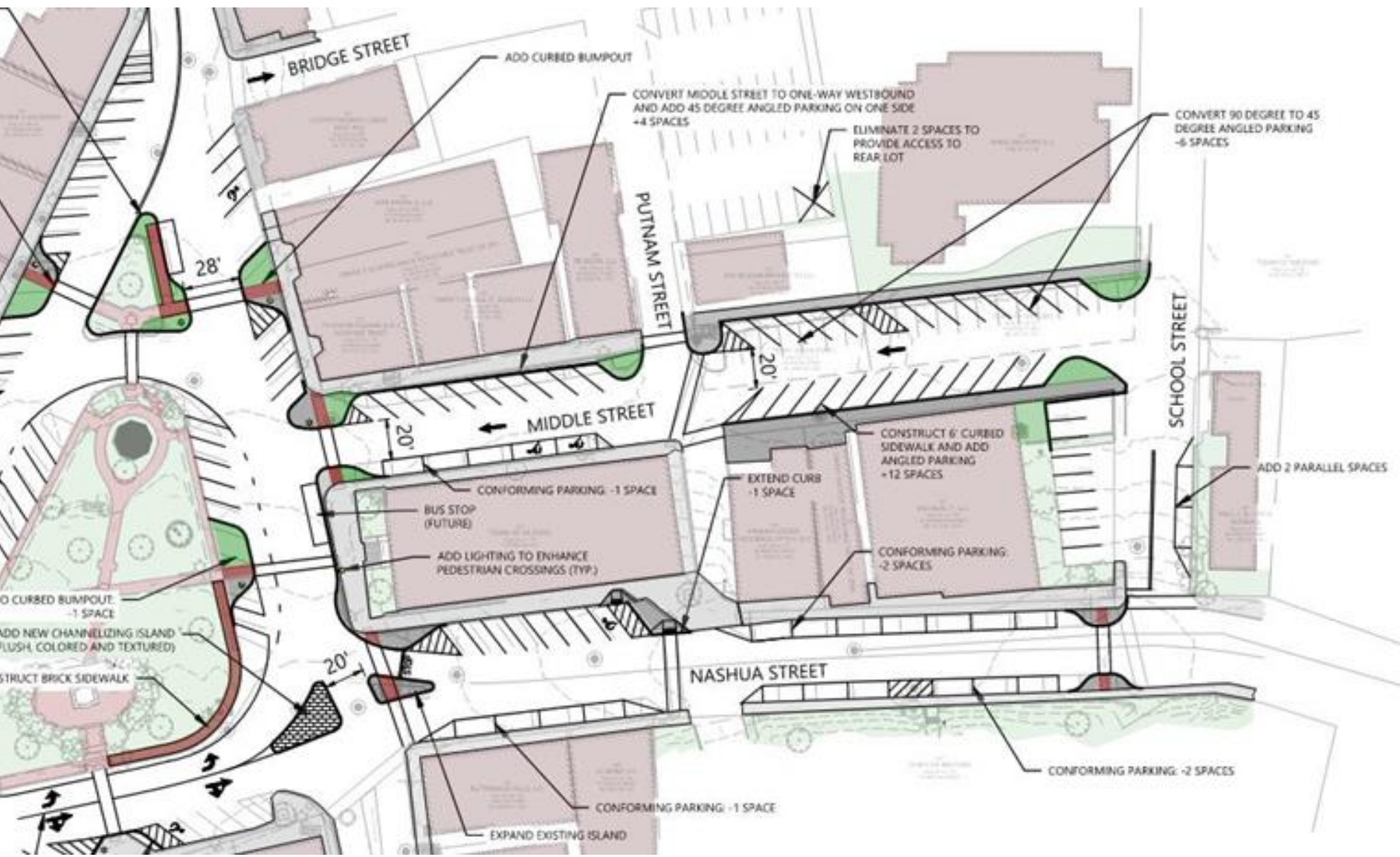


# Milford Oval – Proposed Improvements





# Milford Oval – Proposed Improvements



# Milford Oval – Proposed Improvements





[illegible]



# Milford Oval – Proposed Improvements



**Washington St.,  
Hoboken, NJ**



# Project Location: Area 2 – Nashua Street



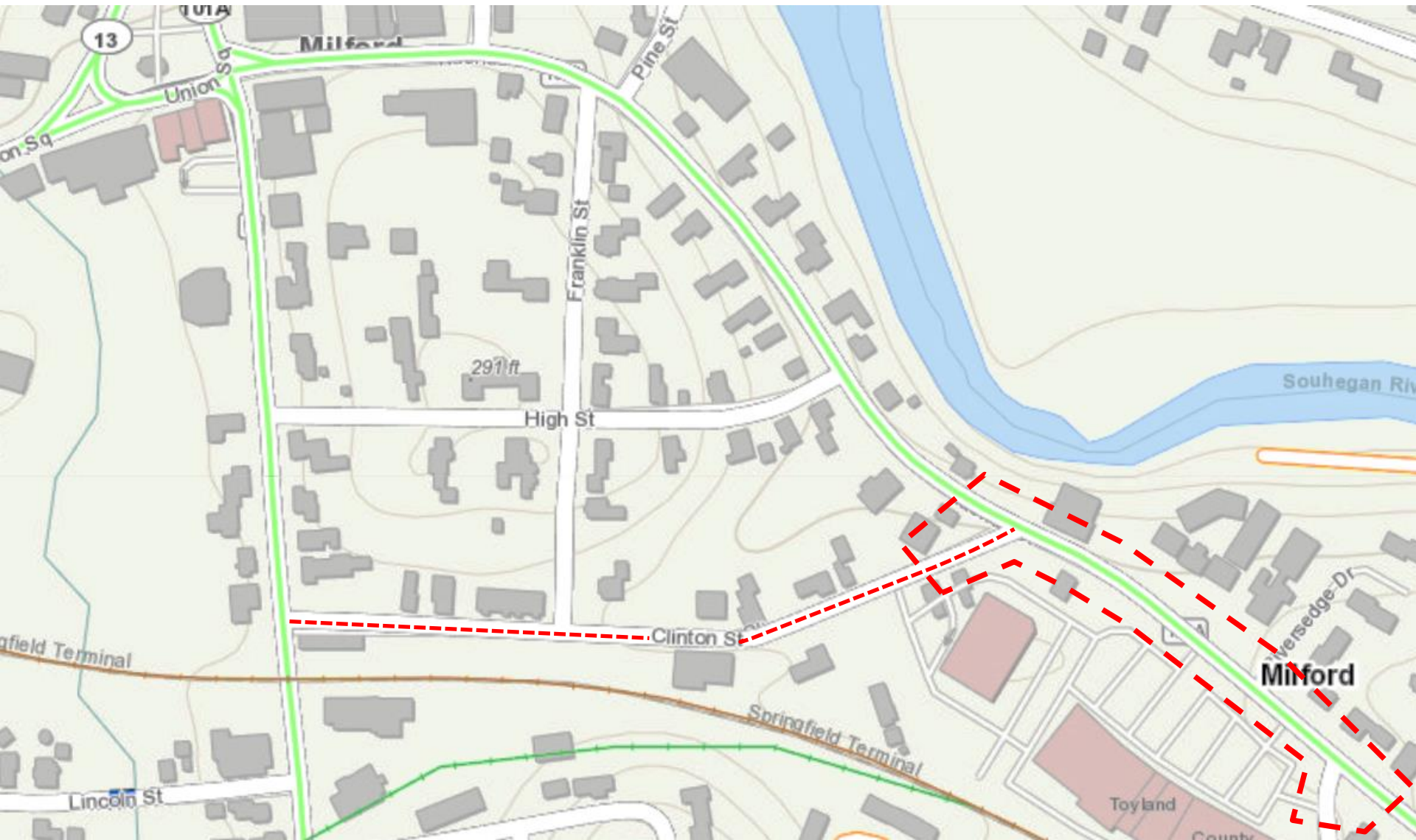
# Nashua Street - Project Considerations

- Traffic Operations and Safety
- ADA Compliance and Pedestrian Safety
- Multimodal Accommodations
- Cultural and Environmental Resources
- Right-of-Way Constraints



# Nashua Street - Project Considerations

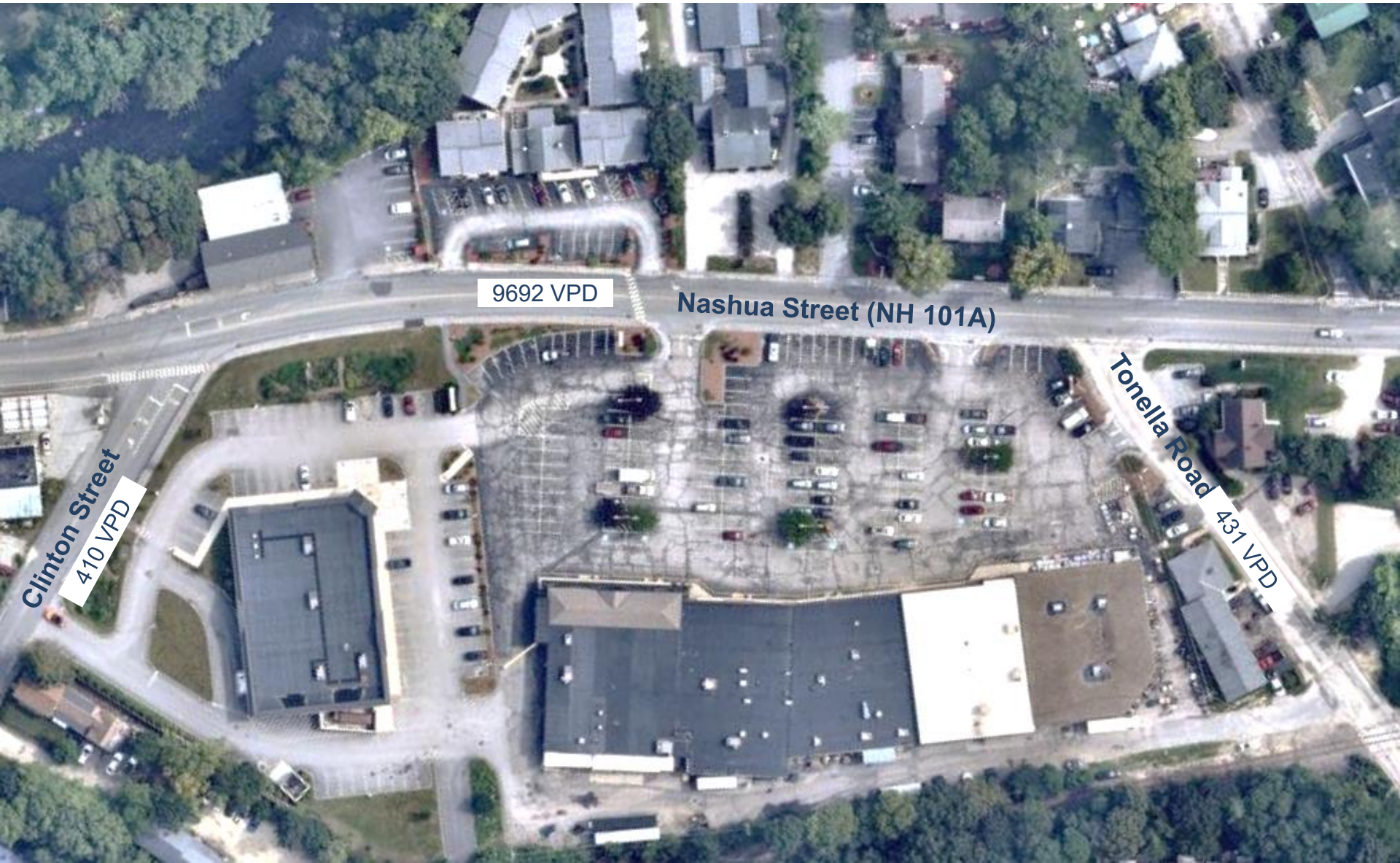
## Traffic Operations and Safety





# Nashua Street - Project Considerations

## Traffic Operations and Safety





# Nashua Street - Project Considerations

## Traffic Operations and Safety





# Nashua Street - Project Considerations

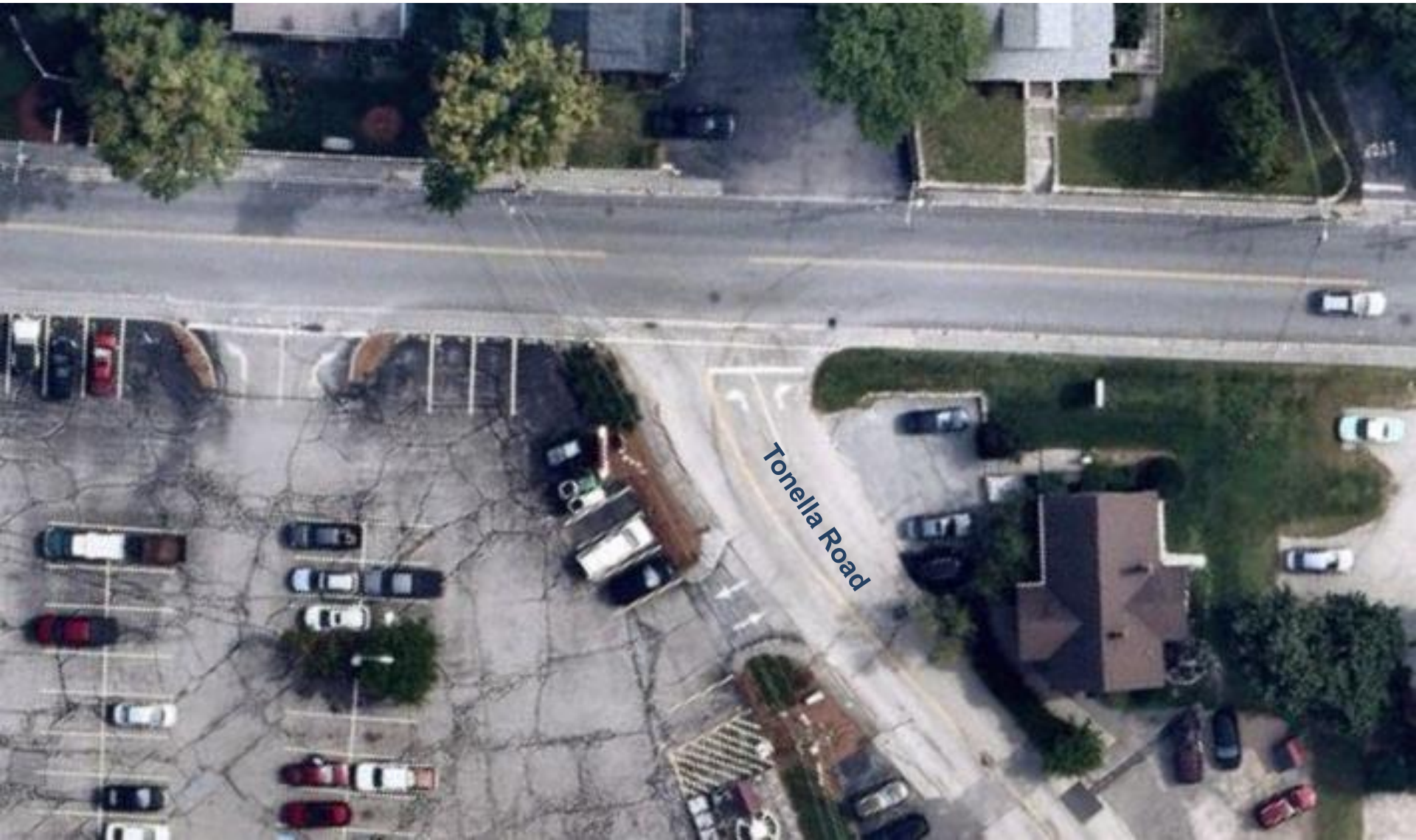
## Traffic Operations and Safety





# Nashua Street - Project Considerations

## Traffic Operations and Safety





# Nashua Street - Project Considerations

## ADA Compliance and Pedestrian Safety



Faded  
Crosswalk to  
Stone House  
Condos



# Nashua Street - Project Considerations

## ADA Compliance and Pedestrian Safety



Utility poles  
constrain sidewalks





# Nashua Street - Project Considerations

## Multimodal Accommodations





# Nashua Street - Project Considerations

## Cultural and Environmental Resources





# Nashua Street - Project Considerations

## Right-of-Way Constraints





# Nashua Street – Purpose and Need Statement

**Purpose:** To improve pedestrian accommodations and motor vehicle operations and safety within the defined corridor.

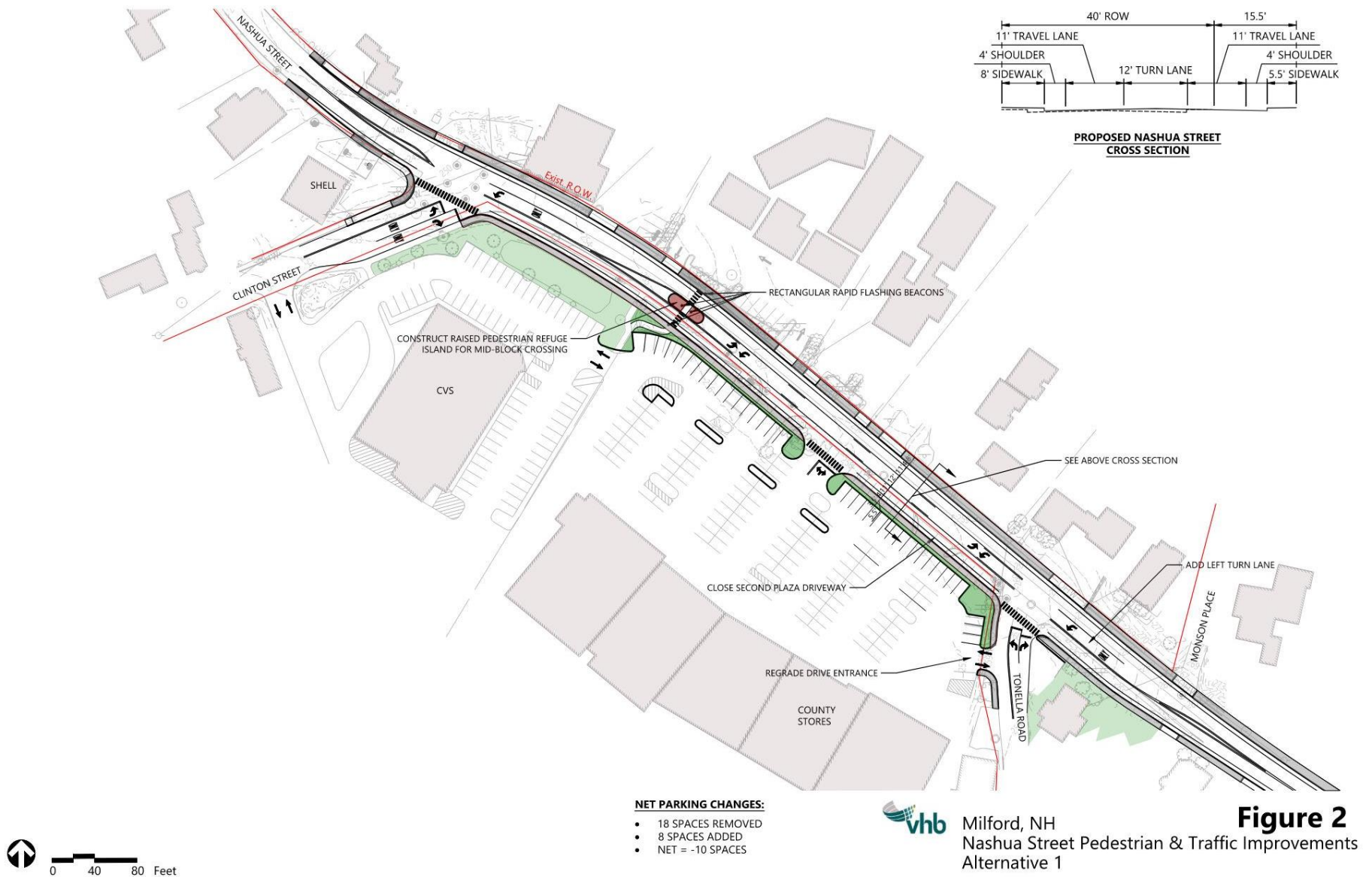
**Need:** There is a need for improved sidewalks where the width is constrained and crosswalks where they cross Nashua Street.

# Nashua Street – Purpose and Need Statement

**Need (continued):** There is a need to better accommodate turning vehicles on Nashua Street and to improve conditions at the Clinton Street and Tonella Road intersections.

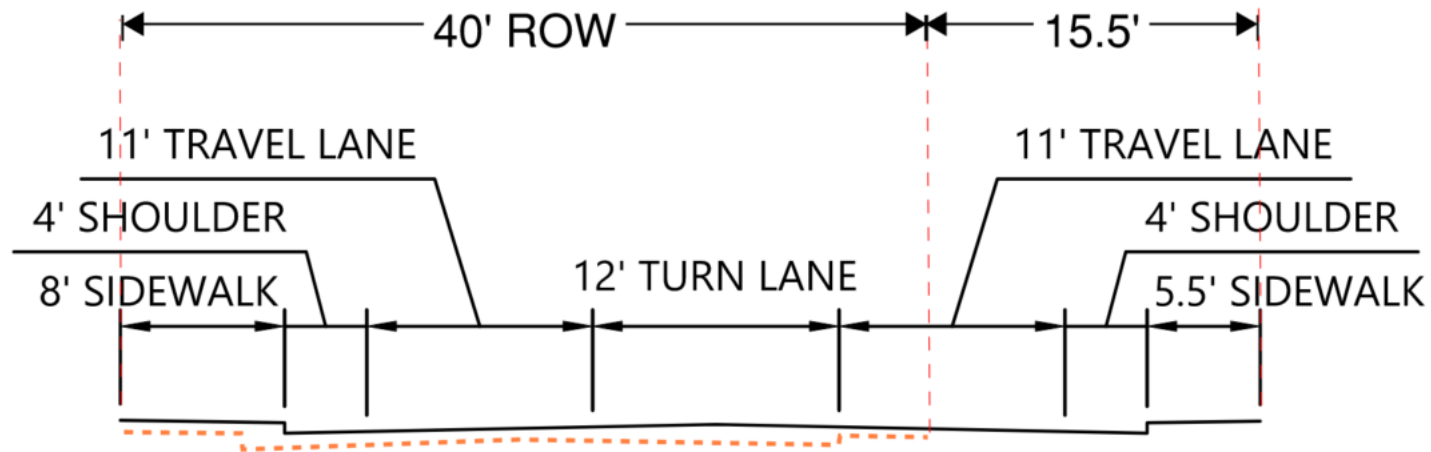


# Nashua Street – Proposed Improvements (ALT-1)



**Figure 2**  
Milford, NH  
Nashua Street Pedestrian & Traffic Improvements  
Alternative 1

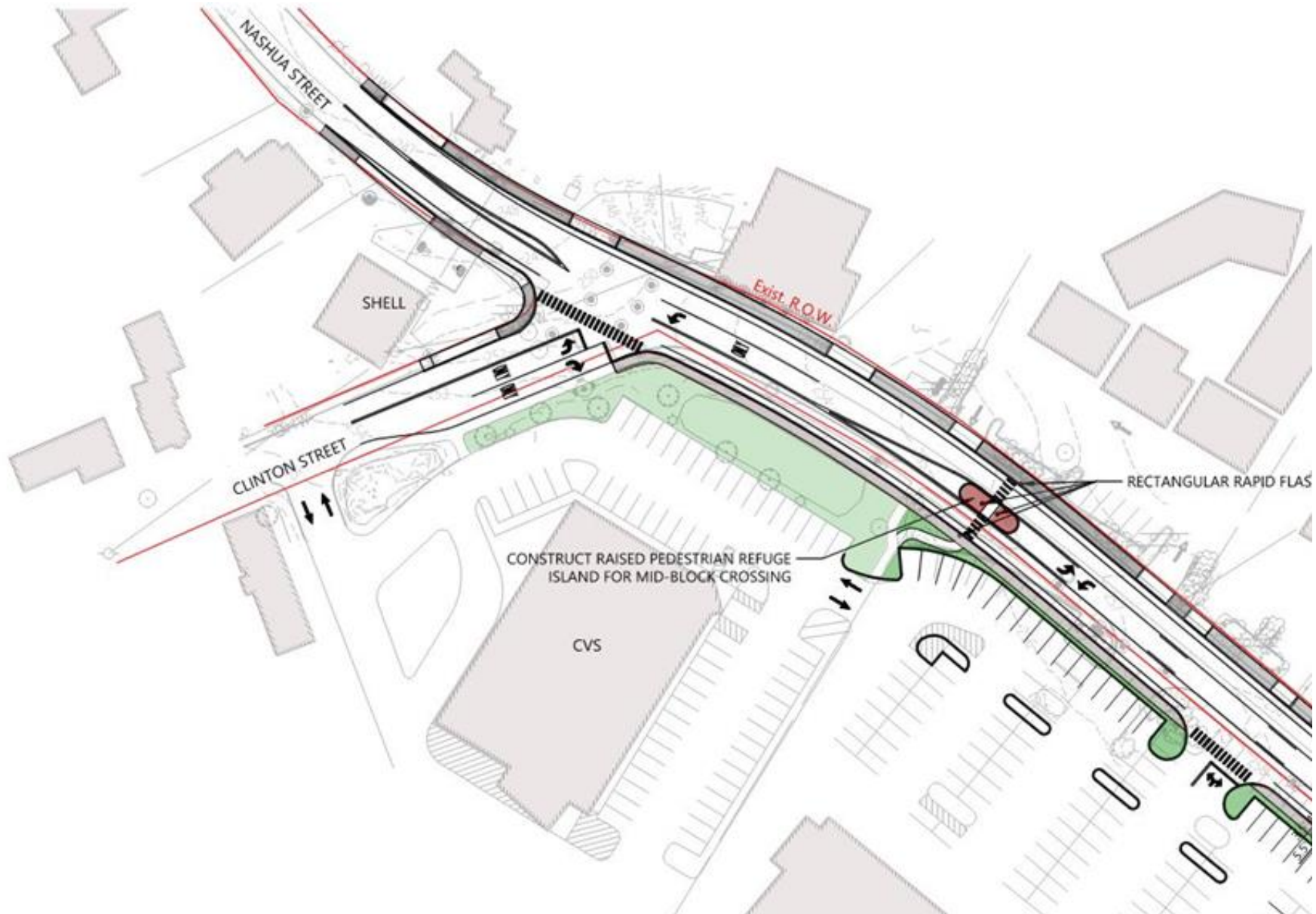
# Nashua Street – Proposed Improvements (ALT-1)



**PROPOSED NASHUA STREET**  
**CROSS SECTION**



# Nashua Street – Proposed Improvements (ALT-1)

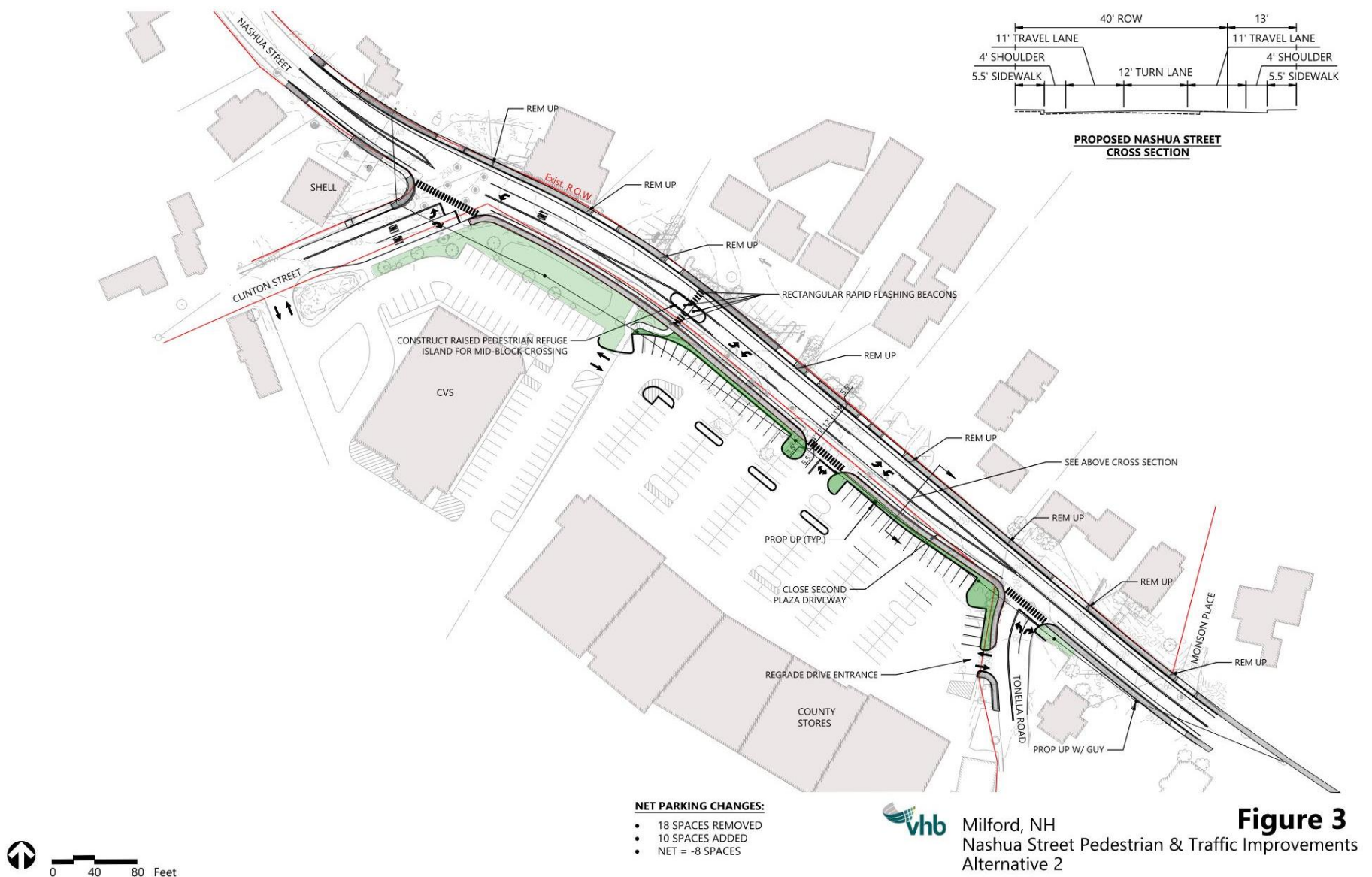


# Nashua Street – Proposed Improvements (ALT-1)





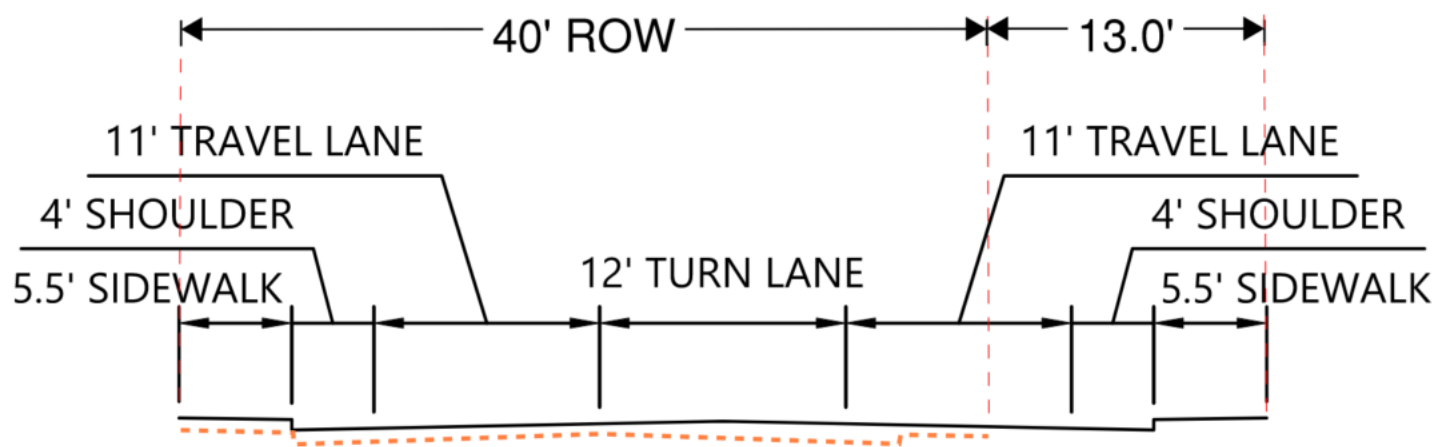
# Nashua Street – Proposed Improvements (ALT-2)



 Milford, NH  
Nashua Street Pedestrian & Traffic Improvements  
Alternative 2

**Figure 3**

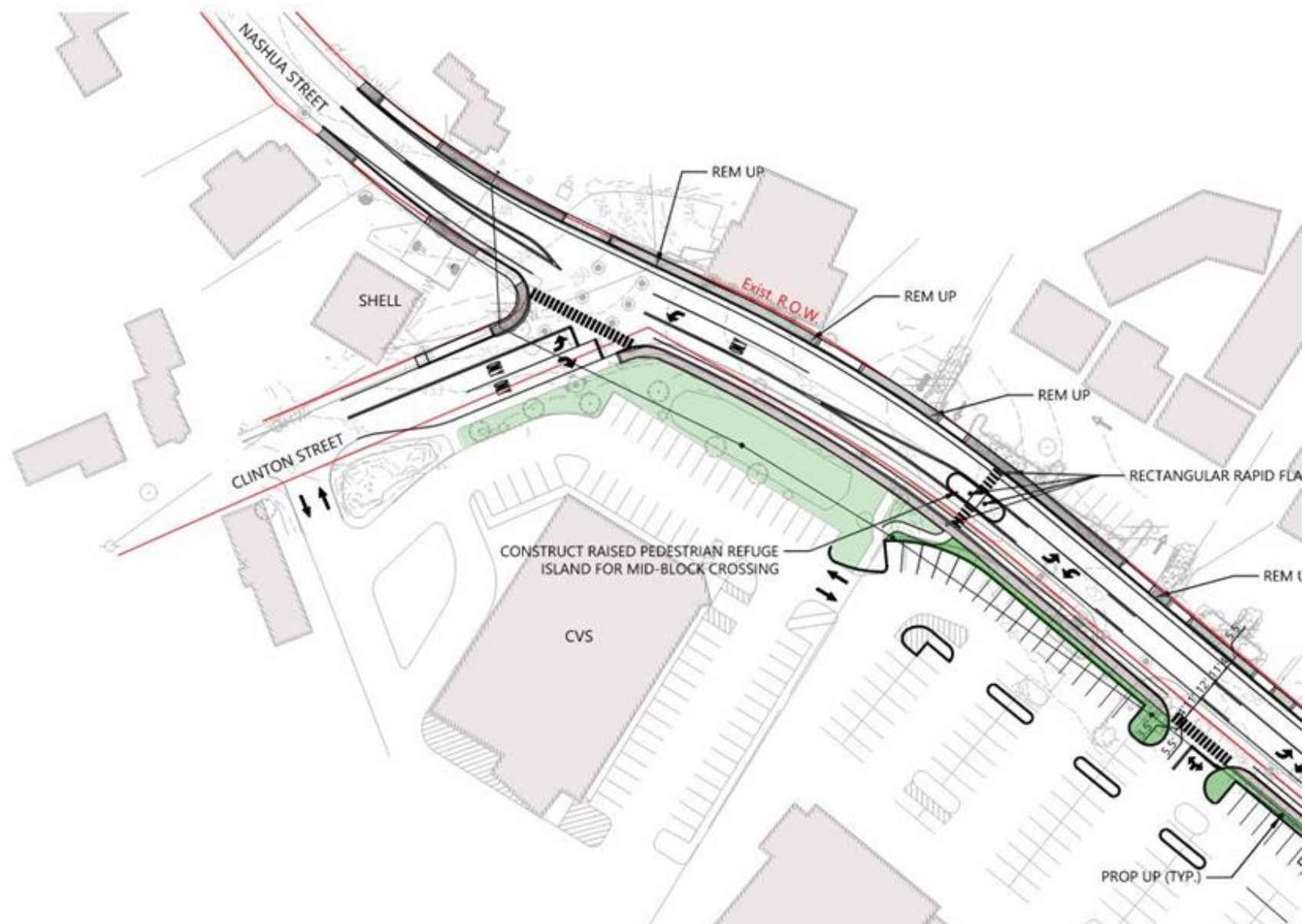
# Nashua Street – Proposed Improvements (ALT-2)



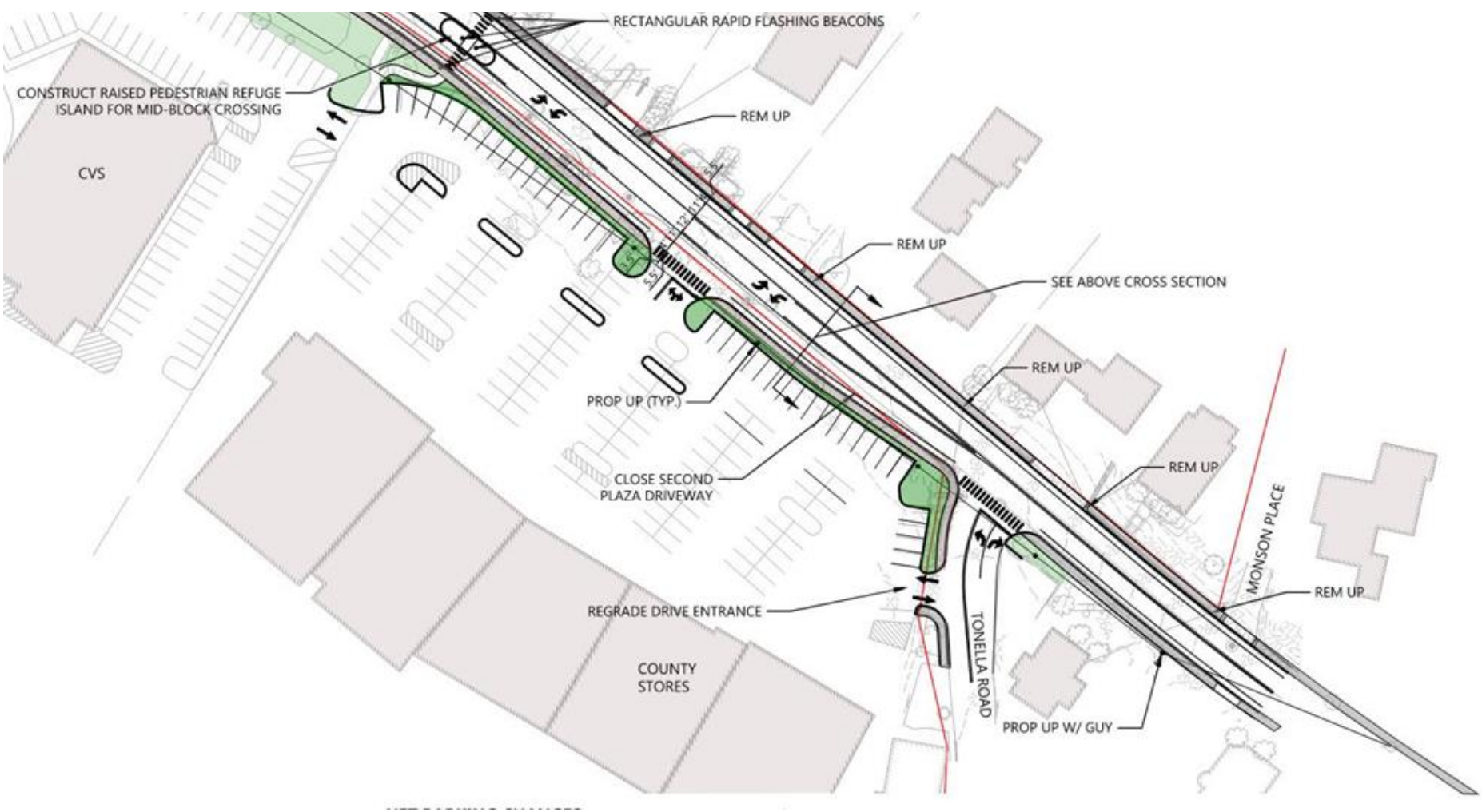
**PROPOSED NASHUA STREET**  
**CROSS SECTION**



# Nashua Street – Proposed Improvements (ALT-2)



# Nashua Street – Proposed Improvements (ALT-2)





# Conceptual Cost Estimates

## Milford Oval

	<b>\$879,291</b>
MISCELLANEOUS ITEMS (10%)	<b>\$87,929</b>
CONTINGENCIES (20%)	<b>\$175,858</b>
SUBTOTAL:	<b>\$1,143,078</b>
TOTAL ESTIMATED CONSTRUCTION COST	<b>\$1,143,000</b>
CONSTRUCTION ENGINEERING, INSPECTION AND TESTING	<b>\$90,000</b>
ESTIMATED PROJECT TOTAL:	<b>\$1,233,000</b>

## Nashua Street

	<b>\$835,500</b>
MISCELLANEOUS ITEMS (10%)	<b>\$83,550</b>
CONTINGENCIES (20%)	<b>\$167,100</b>
SUBTOTAL:	<b>\$1,086,150</b>
TOTAL ESTIMATED CONSTRUCTION COST	<b>\$1,086,000</b>
CONSTRUCTION ENGINEERING, INSPECTION AND TESTING	<b>\$90,000</b>
ESTIMATED PROJECT TOTAL:	<b>\$1,176,000</b>

## Immediate Next Steps:

- Select Preferred Alternative(s)
- Complete Engineering Study
- Complete Environmental Documentation
- Advance Preliminary Design
- Construction 2024/2025





# Please Share Your Thoughts with Us

Contact Information:

Lincoln Daley: [ldaley@milford.nh.gov](mailto:ldaley@milford.nh.gov)

Greg Bakos: [gbakos@vhb.com](mailto:gbakos@vhb.com)

